

Type 1 Screw Cover Wireway Fittings - Painted & Galvanized

Catalog Number

Connector				
Catalog Number	A		B	
	in.	mm	in.	mm
22 C	2.50	64	2.50	64
33 C	3.00	76	3.00	76
44 C	4.00	102	4.00	102
64 C	6.00	152	4.00	102
66 C	6.00	152	6.00	152
88 C	8.00	203	8.00	203
1010 C	10.00	254	10.00	254
1212 C	12.00	305	12.00	305

Reducer												
Catalog Number	Painted	Galvanized	A1		B1		A2		B2		C	
			in.	mm	in.	mm	in.	mm	in.	mm		
2233 FR		2233 FRGV	2.50	64	2.50	64	3.00	76	3.00	76	6.00	152
3344 FR		3344 FRGV	3.00	76	3.00	76	4.00	102	4.00	102	8.00	203
4466 FR		4466 FRGV	4.00	102	4.00	102	6.00	152	6.00	152	10.00	254
6688 FR		6688 FRGV	6.00	152	6.00	152	8.00	203	8.00	203	12.00	305
881010 FR		881010 FRGV	8.00	203	8.00	203	10.00	254	10.00	254	12.00	305
10101212 FR		10101212 FRGV	10.00	254	10.00	254	12.00	305	12.00	305	16.00	406

Wireway End Flange										
Catalog Number	Painted	Galvanized	A		B		E		F	
			in.	mm	in.	mm	in.	mm	in.	mm
22 GF		22 GFGV	2.50	64	2.50	64	4.00	102	4.00	102
33 GF		33 GFGV	3.00	76	3.00	76	4.50	114	4.50	114
44 GF		44 GFGV	4.00	102	4.00	102	5.50	140	5.50	140
64 GF		64 GFGV	6.00	152	4.00	102	7.50	191	5.50	140
66 GF		66 GFGV	6.00	152	6.00	152	7.50	191	7.50	191
88 GF		88 GFGV	8.00	203	8.00	203	9.50	241	9.50	241
1010 GF		1010 GFGV	10.00	254	10.00	254	11.50	292	11.50	292
1212 GF		1212 GFGV	12.00	305	12.00	305	13.50	343	13.50	343

90° Elbow												
Catalog Number	Painted	Galvanized	A		B		C		E		F	
			in.	mm	in.	mm	in.	mm	in.	mm	in.	mm
22 L COMBO		22 L COMBOGV	2.50	64	2.50	64	5.59	142	4.28	109	4.28	109
33 L COMBO		33 L COMBOGV	3.00	76	3.00	76	6.09	155	4.50	114	4.50	114
44 L COMBO		44 L COMBOGV	4.00	102	4.00	102	7.09	180	5.00	127	5.00	127
64 L COMBO		64 L COMBOGV	4.00	102	6.00	152	10.09	256	5.00	127	5.00	127
66 L COMBO		66 L COMBOGV	6.00	152	6.00	152	10.09	256	7.00	178	7.00	178
88 L COMBO		88 L COMBOGV	8.00	203	8.00	203	12.09	307	8.00	203	8.00	203
1010 L COMBO		1010 L COMBOGV	10.00	254	10.00	254	14.09	358	9.00	229	9.00	229
1212 L COMBO		1212 L COMBOGV	12.00	305	12.00	305	16.09	409	10.00	254	10.00	254
22 L SIDE		22 L SIDE	2.50	64	2.50	64	5.59	142	4.28	109	4.28	109
33 L SIDE		33 L SIDE	3.00	76	3.00	76	6.09	155	4.50	114	4.50	114
44 L SIDE		44 L SIDE	4.00	102	4.00	102	7.09	180	5.00	127	5.00	127
64 L SIDE		64 L SIDE	6.00	152	4.00	102	10.09	256	7.00	178	7.00	178
66 L SIDE		66 L SIDE	6.00	152	6.00	152	10.09	256	7.00	178	7.00	178
88 L SIDE		88 L SIDE	8.00	203	8.00	203	12.09	307	8.00	203	8.00	203
1010 L SIDE		1010 L SIDE	10.00	254	10.00	254	14.09	358	10.00	254	9.00	229
1212 L SIDE		1212 L SIDE	12.00	305	12.00	305	16.09	409	10.00	254	10.00	254
22 L SWEEP		22 L SWEEP	2.50	64	2.50	64	7.91	201	4.25	108	4.25	108
33 L SWEEP		33 L SWEEP	3.00	76	3.00	76	8.41	214	6.84	174	6.84	174
44 L SWEEP		44 L SWEEP	4.00	102	4.00	102	9.41	239	7.34	186	7.34	186
64 L SWEEP		64 L SWEEP	4.00	102	6.00	152	11.41	290	8.34	212	8.34	212
66 L SWEEP		66 L SWEEP	6.00	152	6.00	152	11.41	290	8.34	212	8.34	212
88 L SWEEP		88 L SWEEP	8.00	203	8.00	203	13.41	341	9.34	237	9.34	237
1010 L SWEEP		1010 L SWEEP	10.00	254	10.00	254	15.41	391	10.34	263	10.34	263
1212 L SWEEP		1212 L SWEEP	12.00	305	12.00	305	17.41	442	11.34	288	11.34	288

Telescopic Fitting										
Catalog Number	Painted	Galvanized	A		B1		B2		C	
			in.	mm	in.	mm	in.	mm	in.	mm
22 FTF		22 FTFGV	2.75	70	1.75	44	1.12	28	12.00	305
33 FTF		33 FTFGV	3.25	83	2.25	57	1.12	28	12.00	305
44 FTF		44 FTFGV	4.25	108	3.25	83	1.12	28	12.00	305
64 FTF		64 FTFGV	6.25	159	3.25	83	1.12	28	12.00	305
66 FTF		66 FTFGV	6.25	159	5.25	133	1.12	28	12.00	305
88 FTF		88 FTFGV	8.25	210	7.25	184	1.12	28	12.00	305
1010 FTF		1010 FTFGV	10.25	260	9.25	235	1.12	28	12.00	305
1212 FTF		1212 FTFGV	12.25	311	11.25	286	1.12	28	12.00	305

End										
KO	Catalog Number				A		B			
	Painted		Galvanized		in.	mm	in.	mm		
	No KO	KO	No KO	KO					in.	mm
22 E		22 E NK	22 EGV	22 EGV NK	2.50	64	2.50	64		
33 E		33 E NK	33 EGV	33 EGV NK	3.00	76	3.00	76		
44 E		44 E NK	44 EGV	44 EGV NK	4.00	102	4.00	102		
64 E		64 E NK	64 EGV	64 EGV NK	6.00	152	4.00	102		
66 E		66 E NK	66 EGV	66 EGV NK	6.00	152	6.00	152		
88 E		88 E NK	88 EGV	88 EGV NK	8.00	203	8.00	203		
1010 E		1010 E NK	1010 EGV	1010 EGV NK	10.00	254	10.00	254		
1212 E		1212 E NK	1212 EGV	1212 EGV NK	12.00	305	12.00	305		

See drawing for KO sizes.

Wireway Hanger										
Catalog Number	Painted	Galvanized	G		H		J		K	
			in.	mm	in.	mm	in.	mm	in.	mm
22 FH		22 FHGV	8.50	216	6.50	165	6.50	165	2.87	73
33 FH		33 FHGV	10.50	267	8.50	216	9.00	229	3.87	98
44 FH		44 FHGV	12.50	318	10.50	267	10.37	263	4.87	124
66 FH		66 FHGV	16.50	419	14.50	368	13.50	343	5.87	149
88 FH		88 FHGV	20.50	521	18.50	470	16.75	425	6.87	174
1010 FH*		1010 FHGV*	24.50	622	22.50	572	19.75	502	7.87	200
1212 FH*		1212 FHGV*	28.50	724	26.50	673	22.75	578	8.87	225

*Hangers are shipped welded in the top cover assembly position.

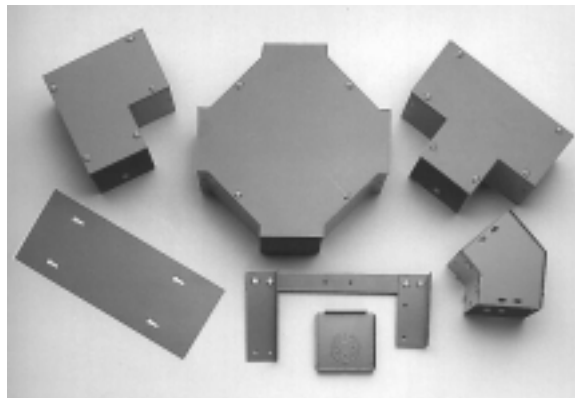
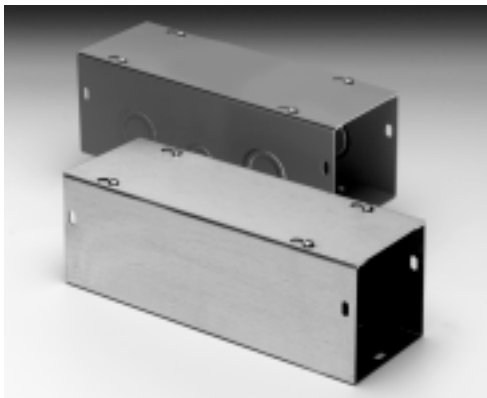
90° Elbow - Tee - Cross										
Catalog Number	Painted	Galvanized	A		B		C			
			in.	mm	in.	mm	in.	mm	in.	mm
22 LTX		22 LTXGV	2.50	64	2.50	64	4.50	114		
33 LTX		33 LTXGV	3.00	76	3.00	76	5.00	127		
44 LTX		44 LTXGV	4.00	102	4.00	102	6.00	152		
64 LTX		64 LTXGV	6.00	152	4.00	102	8.00	203		
66 LTX		66 LTXGV	6.00	152	6.00	152	8.00	203		
88 LTX		88 LTXGV	8.00	203	8.00	203	10.00	254		
1010 LTX		1010 LTXGV	10.00	254	10.00	254	12.00	305		
1212 LTX		1212 LTXGV	12.00	305	12.00	305	14.00	356		

Notes: Dimensions are in inches. Millimeters shown are for reference only. Data subject to change without notice.



Type 1 Screw Cover Wireway - Painted & Galvanized

Data Sheet



Application

- Houses runs of control and power cable
- Used for cable and wire junction, distribution and termination

Standards

- UL 870 listed, Type 1
- CSA C22.2 No. 26 certified, Type 1
- Conforms to NEMA standard for Type 1
- IEC 529, IP30

Finish

- Wash and phosphate undercoat or galvanized steel
- ANSI 61 gray acrylic electrocoat finish

Accessories

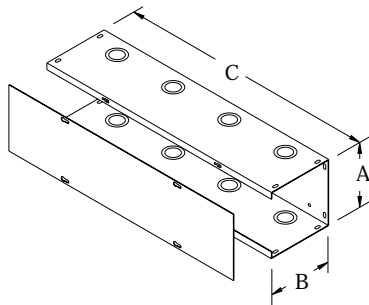
- Sealing devices
- Touch-up paint
- See Accessories section

Construction

- Wireway body and cover are fabricated from code gauge steel or galvanized steel, (see table)
- Wireway body has mounting holes on the back
- Wireway is available with or without knockouts on the top and bottom sides
- Wireway fittings have no knockouts, ends are available with or without knockouts
- Cover is secured to the body with plated screws
- Keyhole slots are furnished on the wireway cover which allow easy access to the inside without removing the screws
- Flush and surface wireway covers are available
- Wireway exceeding 72 inches in length has two overlapping covers
- Variety of fittings allow runs which can change direction, junction and terminate
- Standard wireway connectors (sold separately) have a unique gate feature which can swing completely open allowing for continuous runs of wire and cable
- Universal connectors are also available for adapting to other manufacturer's wireway, (see table, page 16)
- Completely interchangeable with Type 1 Hinge Cover Wireway and Fittings

Type 1 Screw Cover Wireway - Painted & Galvanized

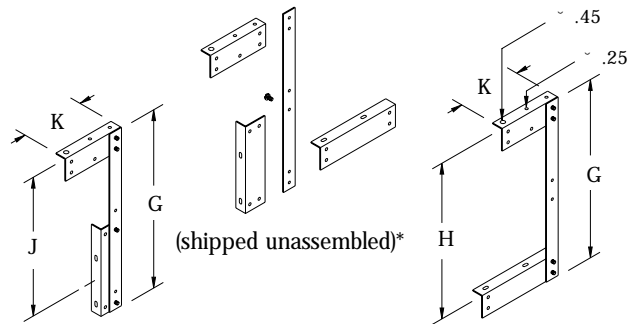
Illustration Sheet



Wireway Section

Lengths from 12.00" (305 mm) to 120.00" (3048 mm). Wireway exceeding 72.00" (1829 mm) has two covers. Shown with KO's also available without.

Wireway Hangers

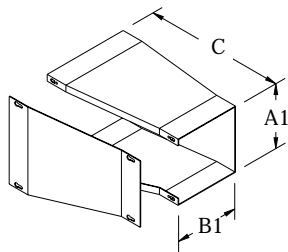


Side Cover Assembly

For those installations where the wireway cover must be removed from the side. *1010 FH & 1212 FH are shipped welded in the top cover assembly position.

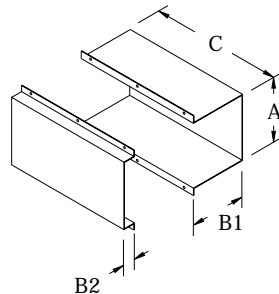
Top Cover Assembly

For those installations where the wireway cover must be removed from the top. *1010 FH & 1212 FH are shipped welded in the top cover assembly position.



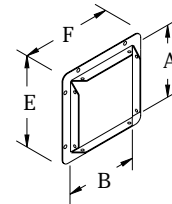
Reducer

A2 and B2 dimensions (see catalog table), correspond to the large end opening. Used to reduce or enlarge wireway runs.



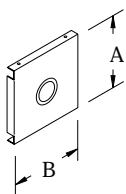
Telescopic Fitting

Adjustable length up to 10.00" (254 mm). Wraps around the two near joining wireway lengths to achieve a continuous run.



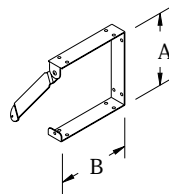
Wireway End Flange

Allows for a secure connection of wireway to an adjoining enclosure or wall.



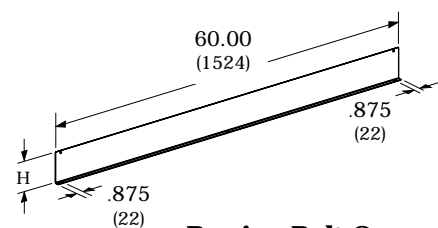
End

Used to terminate wireway or fitting. 2.50"x2.50" (64 mm x 64 mm) through 8.00"x8.00" (203 mm x 203 mm) ends have a 1.50"-1.25" concentric 2-way KO. 10.00" x 10.00" (254 mm x 254 mm) ends and larger have a 3.00"-2.50" concentric 2-way KO for terminating on pipe or conduit. Also available without KO.



Connector

Swing gate allows for continuous runs of wire and cable.



Barrier, Bolt-On

For those installations that require separated wiring compartments.