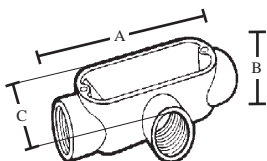


## CONDUIT BODIES RIGID THREADED TYPE

COPPER FREE ALUMINUM

CAT#	A	B	C
LB1	4.295	2.150	1.330
LB2	5.090	2.430	1.540
LB3	5.915	2.765	1.740
LB4	7.894	3.665	2.490
LB5	7.894	3.665	2.490
LB6	10.134	4.275	3.100
LB7	12.500	5.437	4.450
LB8	12.500	5.675	4.450
LB9	15.500	6.922	5.500
LB10	15.500	6.922	5.500

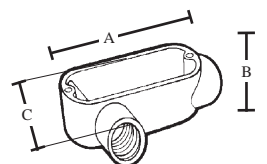
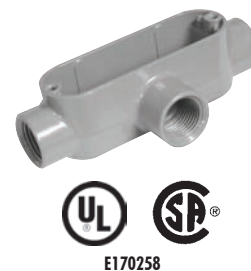
TOPAZ CAT #	UPC#	SIZE	UNIT CTN	SHIP CASE	WT/ CASE
<b>RIGID LB TYPE</b>					
LB1	20840	1/2"	10	100	28
LB2	20850	3/4"	10	50	19
LB3	20860	1"	5	25	18
LB4	20870	1 1/4"	2	10	13
LB5	20880	1 1/2"	2	10	14
LB6	20890	2"	1	5	13
LB7	20900	2 1/2"	—	1	6
LB8	20910	3"	—	1	6
LB9	20920	3 1/2"	—	1	8
LB10	20930	4"	—	1	8



CAT#	A	B	C
T1	4.720	1.370	2.030
T2	5.570	1.625	2.335
T3	6.460	1.900	2.705
T4	8.528	2.770	3.630
T5	8.528	2.770	3.630
T6	10.831	3.335	3.980
T7	13.500	4.060	5.825
T8	13.000	4.685	5.825
T9	15.937	5.450	7.060
T10	15.937	5.450	7.060

### RIGID T TYPE

T1	21730	1/2"	10	100	32
T2	21740	3/4"	10	50	26
T3	21750	1"	5	25	18
T4	21760	1 1/4"	2	10	17
T5	21770	1 1/2"	2	10	19
T6	21780	2"	—	2	5
T7	21790	2 1/2"	—	1	7
T8	21800	3"	—	1	7
T9	21810	3 1/2"	—	1	9
T10	21820	4"	—	1	9



CAT#	A	B	C
LR1	4.295	1.370	2.030
LR2	5.090	1.625	2.330
LR3	5.915	1.900	2.650
LR4	7.894	2.770	3.385
LR5	7.894	2.770	3.385
LR6	10.134	3.335	3.810
LR7	13.000	4.063	5.709
LR8	12.750	4.682	5.506
LR9	15.500	5.452	6.171
LR10	15.500	5.452	6.171

### RIGID LR TYPE

LR1	21240	1/2"	10	100	29
LR2	21250	3/4"	10	50	24
LR3	21260	1"	5	25	19
LR4	21270	1 1/4"	2	10	14
LR5	21280	1 1/2"	2	10	17
LR6	21290	2"	1	5	14
LR7	21300	2 1/2"	—	1	6
LR8	21310	3"	—	1	6
LR9	21320	3 1/2"	—	1	8
LR10	21330	4"	—	1	8

